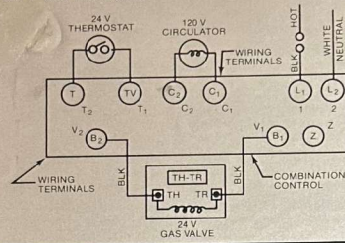


Factory Wiring for NATURAL and PROPANE GAS with Continuous Pilot WITHOUT Vent Damper for "P" and "PT" Boilers.

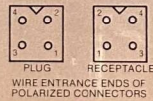
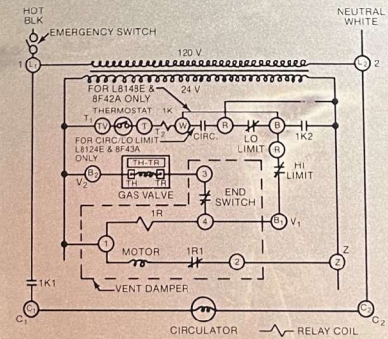
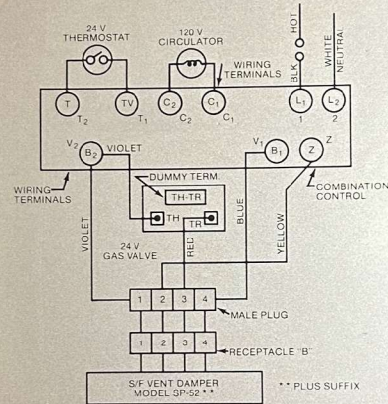


#### BELOW:

Field Wiring for NATURAL GAS **ONLY WITH** SLANT/FIN Vent Damper and Continuous Pilot for "P" and "PT" Boilers

#### WARNING

BEFORE INSTALLING OPTIONAL VENT DAMPER READ WARNING LABEL ON THIS BOILER AND VENT DAMPER. READ SLANT/FIN VENT DAMPER INSTALLATION INSTRUCTION AND REMOVE ALL EXISTING WIRING FROM BOILER BEFORE REWIRING FOR VENT DAMPER.

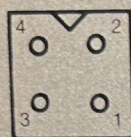


PLUG & RECEPTACLE Are In COMBINATION CONTROL BOX On "100" Series Boilers

Terminal Numbers Shown in Circles Are For HONEYWELL Controls. Others Are For WHITE RODGERS

If Any of the Original Wire As Supplied with the Appliance Must Be Replaced, It Must Be Replaced with Type 105°C Wire Or Its Equivalent.





A square frame containing four circles arranged in a 2x2 grid. The circles are numbered 1, 2, 3, and 4. Circle 1 is at the bottom-left, circle 2 is at the top-left, circle 3 is at the bottom-right, and circle 4 is at the top-right. A small triangle is positioned at the top center of the frame, pointing downwards.

41-1691 C



**Slant/Fin** CORP. GREENVALE, NEW YORK 11548  
**GALAXY**  
**GAS FIRED BOILER**

1.130-1983 LOW PRESSURE BOILER S.N. 531684  
INSTALLATION ON NONCOMBUSTIBLE FLOOR ONLY. FOR  
INSTALLATION ON COMBUSTIBLE FLOORING ONLY WITH KIT NO. 776

**CERTIFIED BY**  
**SLANT/FIN CORP.**  
**MAXIMUM WORKING PRESSURE**  
WATER  PSI  
STEAM  PSI

**MINIMUM RELIEF VALVE CAPACITY**  
 LBS./HR.

USE SUPPLY PRESSURE NATURAL GAS 1" W.G. NATURAL GAS 1" W.G.  
PROPRANE 1" W.G. PROPRANE 1" W.G.

MODEL NO.	GG-125 HP
GAS	NATURAL
A.G.A. INPUT BTU/HR.	125000
A.G.A. OUTPUT BTU/HR.	XXXXXX
D.O.E. CAPACITY BTU/HR.	103000
NET I.B.R. WATER BTU/HR.	89600
NET I.B.R. STEAM SQ. FT.	XXXXXX
115 VOLTS - 60 HERTZ - LESS THAN 12 AMPS	

8647