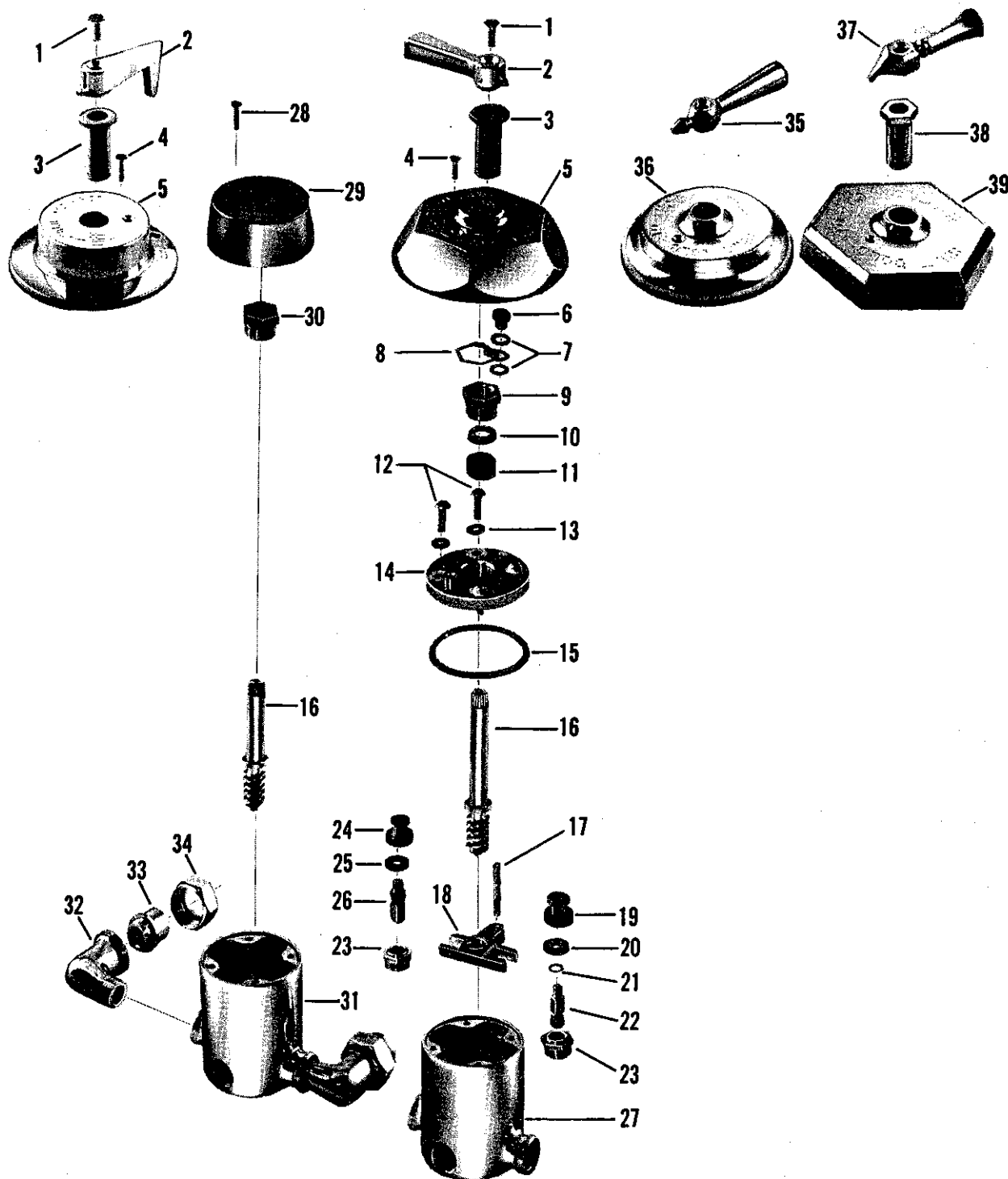
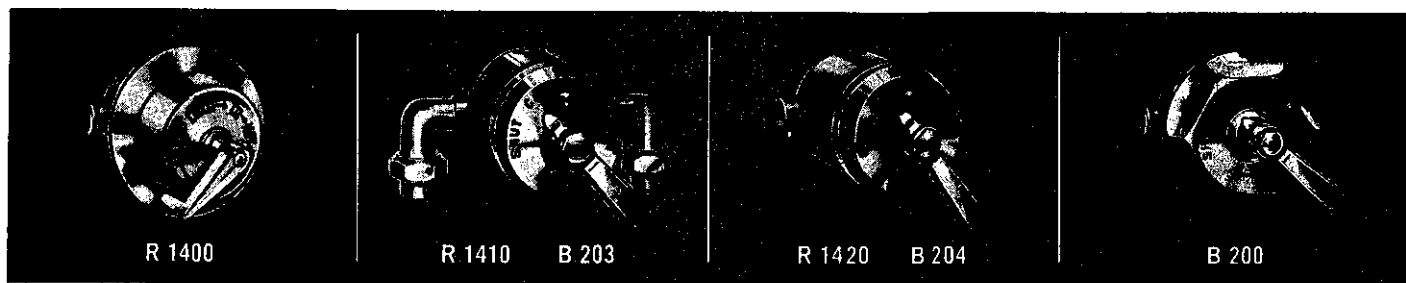


Mixing Valves

Renewable Seats

KISSLER & CO., INC.



KISSLER & CO., INC.

Mixing Valves

Renewable Seats

no.	description	part no.	B 200 1/2"	B 200 3/4"	B 203 R 1410	B 204 R 1420	R 1400 1/2"	R 1400 3/4"	R 1400 1/2" Monogram	R 1400 3/4" Monogram
1	Handle Screw	1390-11								
	Handle Screw	1390-13								
2	Handle	1192-22								
	Handle	850-12 ✓								
	Handle	850-13								
3	Dial Plate Holder	24617-02								
	Dial Plate Holder	24617-03								
4	Dial Plate Screw	1173-31								
	Dial Plate Screw	889-11								
	Dial Plate Screw	889-13								
5	Dial Plate	922-12								
	Dial Plate	894-12								
	Dial Plate	894-13								
6	Regulating Screw Cap	21121-08								
	Regulating Screw Cap	851-17								
7	Screw Cap Washer	1325-07								
8	Packing Nut Holder	65498-08								
9	Packing Nut (Built-in Type)	24476-08								
10	Packing Gland	33894-08								
11	Stem Packing	391-07								
12	Cap Screw	153-07								
	Cap Screw	295-07								
13	Cap Screw Washer	1326-07								
	Cap Screw Washer	1327-37								
14	Cap	27291-08								
	Cap	27292-08								
	Cap	27380-08								
	Cap	27379-08								
15	Cap Washer	998-07								
	Cap Washer	996-17								
16	Stem	27289-02								
	Stem	27290-02								
	Stem	27289-03								
17	Regulating Screw	27340-08								
18	Yoke	27293-08								
19	Seat Washer Holder (Cold)	1399-27								
	Seat Washer Holder (Cold)	27343-08								
20	Seat Washer (Cold)	475-27								
	Seat Washer (Cold)	457-17								
21	Brass Washer (Cold Choke)	65666-08								
	Brass Washer (Cold Choke)	21771-08								
22	Choke (Cold)	1383-27								
	Choke (Cold)	27341-08								
23	Seat	65664-04								
	Seat	27345-04								
24	Seat Washer Holder (Hot)	1400-27								
	Seat Washer Holder (Hot)	27344-08								
25	Seat Washer (Hot)	44-17								
	Seat Washer (Hot)	447-27								
26	Choke (Hot)	1397-27								
	Choke (Hot)	27342-08								
27	Body w/seats (Built-in)	8096-04								
	Body w/seats (Built-in)	8097-04								
28	Dial Plate Screw	1173-31								
29	Dial Plate	924-12								
30	Packing Nut (Exposed Type)	24656-08								
31	Body w/seats (Exposed Type)	8095-02								
	Body w/seats (Exposed Type)	8096-04								
32	Ell	27294-02								
33	Coupling	23921-02								
34	Coupling Nut	24186-02								
35	Colonial Handle	23458-02								
36	Colonial Dial Plate	67086-02								
37	Waldorf Handle	23459-02								
38	Waldorf Dial Plate Holder	24662-02								
39	Waldorf Dial Plate	27202-02								