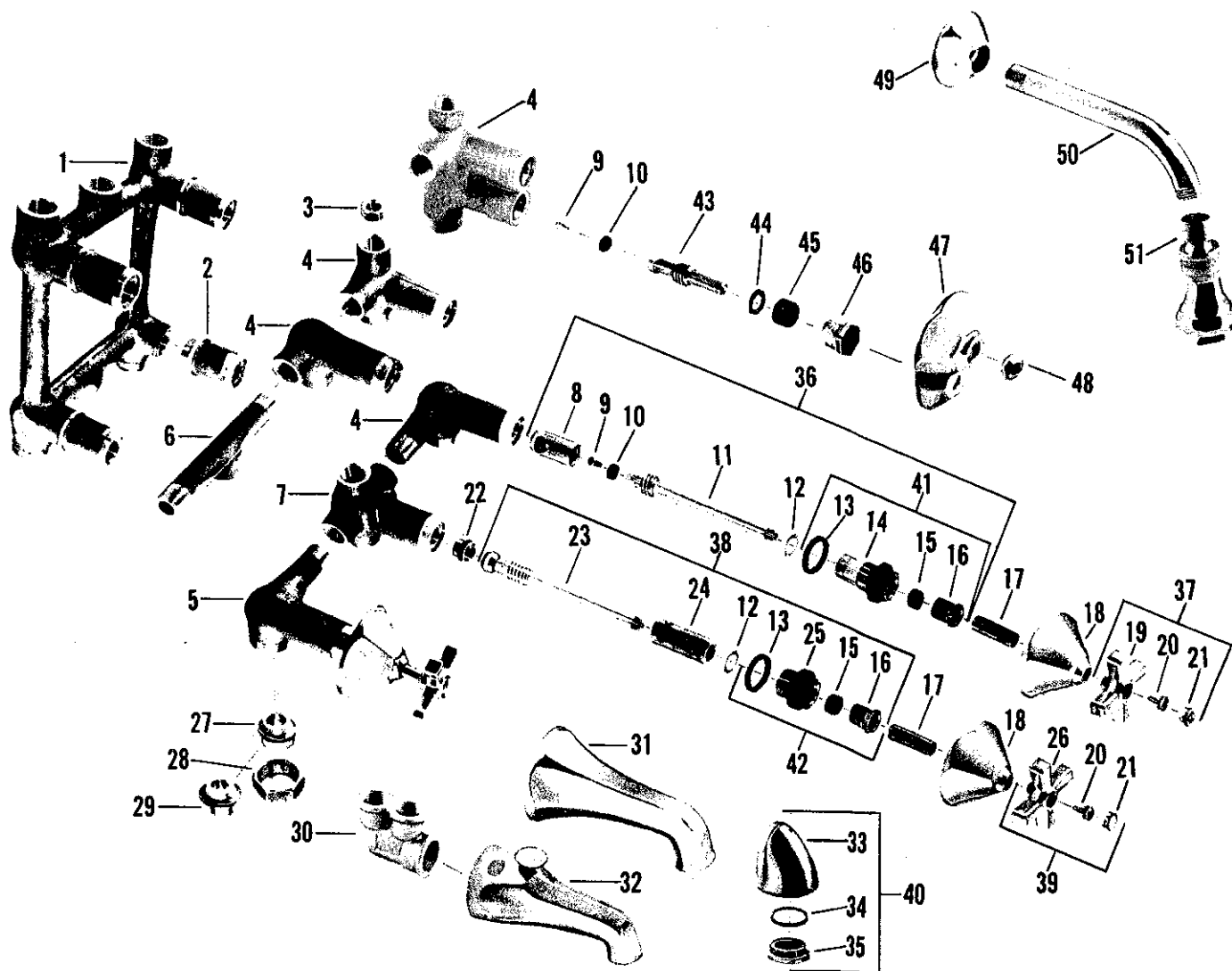
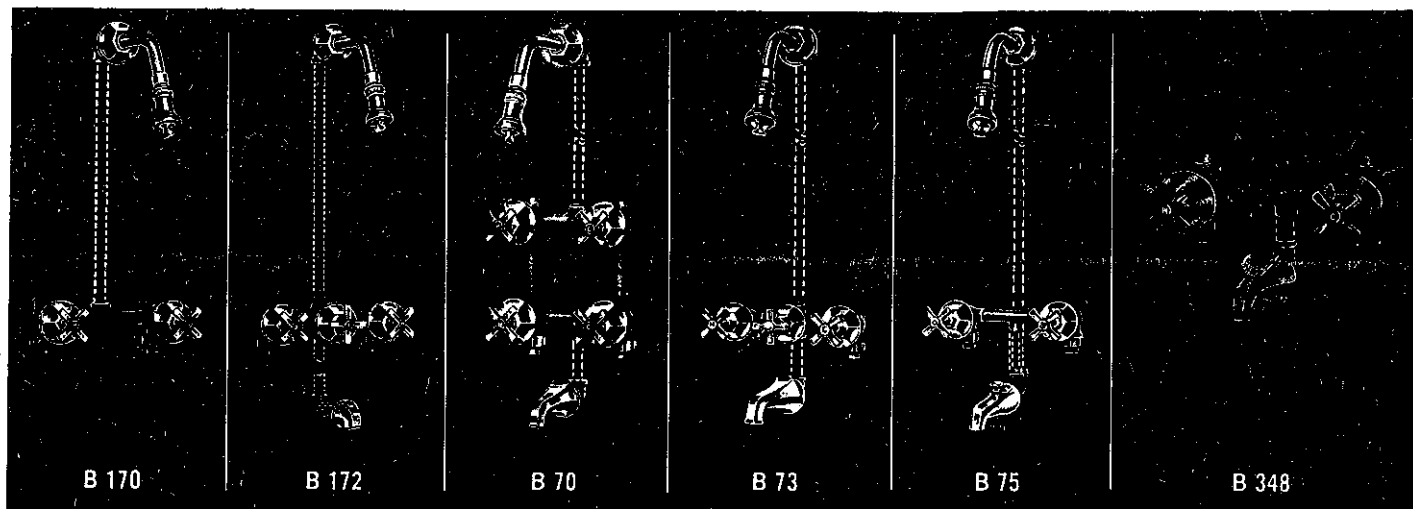


Bath and Shower Fittings

Standard Trim—RE-NU

KISSLER & CO., INC.



no.	description	part no.	B 170	B 172	B 70	B 73	B 75	B 348	B 349
1	Body	36694-08							
2	Shank	37076-08							
3	Plug	27816-07							
4	Valve Body - R.H.	37326-08							
	Valve Body - R.H.	37327-08							
	Valve Body - R.H.	37329-08							
5	Valve Body - L.H.	37323-08							
	Valve Body - L.H.	37328-08							
	Valve Body - L.H.	37330-08							
6	Tee	26821-08							
7	Transfer Valve Body w/seat	5909-08							
8	Re-Nu Sleeve	20336-08							
9	Seat Washer Screw	159-17							
10	Seat Washer	441-07							
11	Stem w/washer & Screw	36536-02							
12	Brass Washer	1167-17							
13	Stuffing Box Washer	408-17							
14	Stuffing Box	37318-08							
15	Stem Packing	1311-07							
16	Stuffing Nut	1184-17							
17	Escutcheon Nipple	39976-05							
18	Escutcheon	1259-12							
19	Handle	1186-12							
20	Handle Screw	264-17							
21	Button - Specify Index	1255-12							
22	Transfer Valve Seat	20032-08							
23	Transfer Valve Stem	21698-02							
24	Sleeve for Transfer Valve	20376-08							
25	Stuffing Box for Transfer Valve	37319-08							
26	Handle for Transfer Valve	1067-02							
27	Swivel - Iron Pipe	1836-07							
28	Coupling Nut	25513-08							
29	Swivel - Copper Sweat	244-17							
30	Double Ell	300-17							
31	Spout	206-22							
32	Diverter Spout	1458-02							
33	Foot Tester Nozzle	25757-02							
34	Face Washer	73-07							
35	Face	67167-02							
36	Re-Nu Trim Assembly	18293-02							
37	Assembled Valve Handle - Specify Index	9171-02							
38	Assembled Trim for Transfer Valve	18355-02							
39	Assembled Handle for Transfer Valve	9192-02							
40	Assembled Foot Tester Nozzle	6192-02							
41	Stuffing Box S/A	8137-08							
42	Stuffing Box S/A for Transfer Valve	8116-08							
43	Integral Stop Stem w/washer & Screw	21183-02							
44	Brass Washer	21625-08							
45	Stem Packing	81-27							
46	Packing Nut	25003-08							
47	Escutcheon	31223-02							
48	Escutcheon Holder	198-12							
49	Arm Flange	1275-22							
50	Shower Arm	298-12							
51	Shower Arm Head S/A *	18953-02							

* Refer to R 1301 on page 1-86 for parts for #18953-02