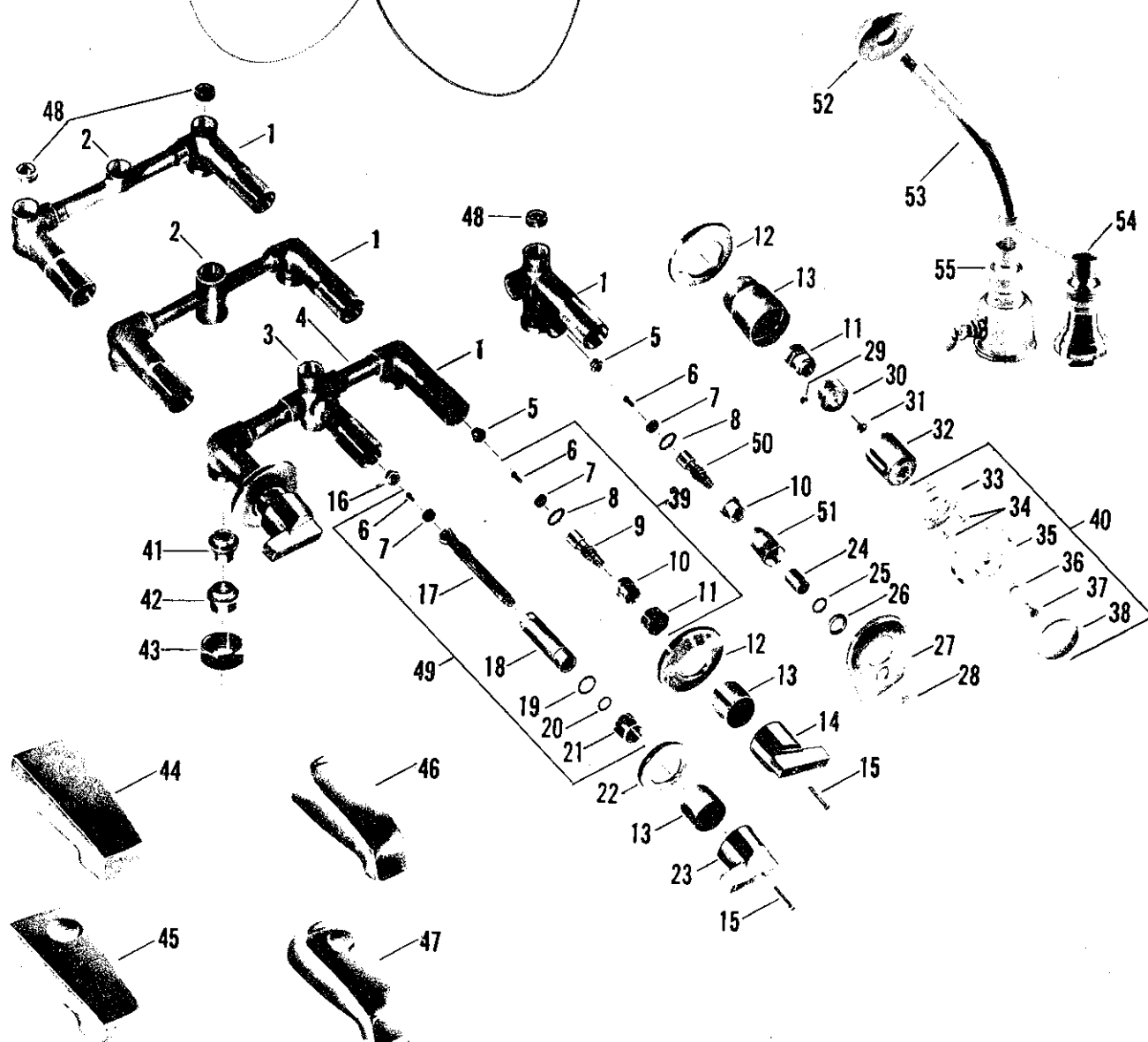
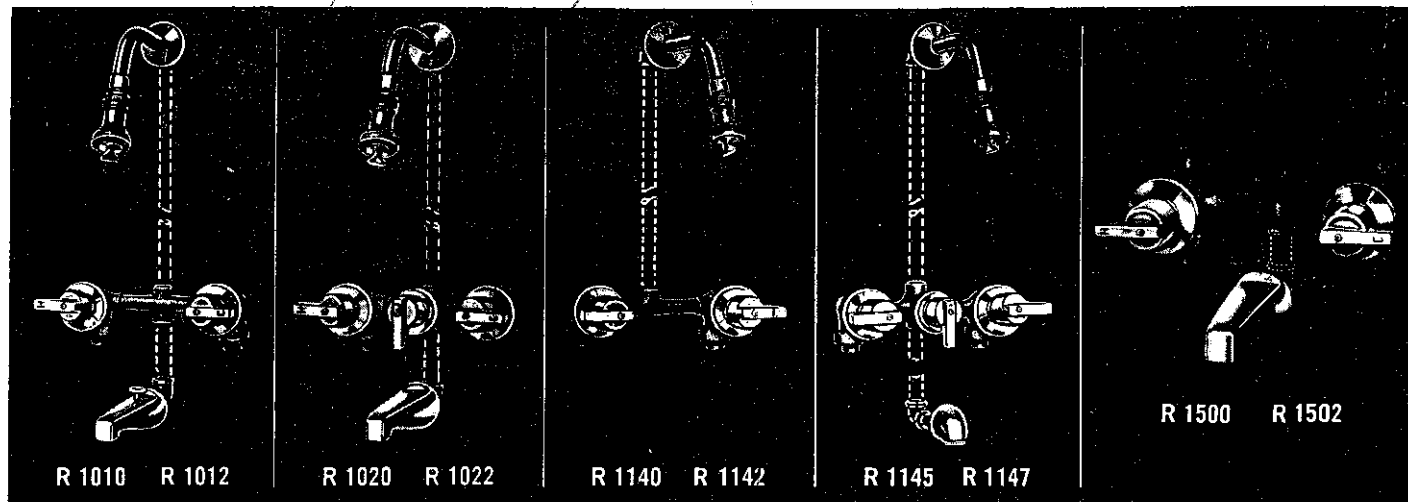


# Bath and Shower Fittings

Quality Trim and Monogram Trim—NU-RE-NU

# KISSLER & CO., INC.



# KISSLER & CO., INC.

## Bath and Shower Fittings Quality Trim and Monogram Trim—NU-RE-NU

no.	description	part no.	R 1010 R 1012	R 1011 R 1013	R 1020 R 1022	R 1140 R 1142	R 1141 R 1143	R 1500 R 1502	R 1501 R 1503	R 1510 R 1512
1	Valve Body w/seat - R.H.	8181-08								
	Valve Body w/seat - R.H.	8183-08								
	Valve Body w/seats - R.H.	8196-08								
	Valve Body w/seat - L.H.	8182-08								
	Valve Body w/seat - L.H.	8184-08								
	Valve Body w/seats - L.H.	8197-08								
2	Tee	25583-08								
	Cross	9820-08								
3	Transfer Body w/seat	8185-08								
4	Nipple	25707-08								
5	Seat	862-14								
6	Seat Washer Screw	759-27								
7	Seat Washer	858-17								
8	"O" Ring	886-17								
9	Stem w/washer and Screw - R.H. Thread	853-14								
	Stem w/washer and Screw - L.H. Thread	856-14								
10	Stem Nut - R.H. Thread	854-17								
	Stem Nut - L.H. Thread	857-17								
11	Lock Nut	855-17								
	Lock Nut - (Monogram)	508-17								
12	Escutcheon	680-32								
	Escutcheon - (Monogram)	25888-03								
13	Escutcheon Holder	890-22								
	Escutcheon Holder - (Monogram)	25162-03								
14	Handle - Specify Index	843-12								
15	Handle Screw	889-11								
16	Transfer Valve Seat	1848-07								
17	Transfer Stem w/washer and Screw	25301-08								
18	Sleeve	892-17								
19	"O" Ring for Sleeve	886-17								
20	"O" Ring	888-17								
21	Lock Nut	877-17								
22	Escutcheon	679-32								
23	Handle - Specify w/arrow	1063-12								
24	Nipple	See Note**								
25	"O" Ring	See Note**								
26	Lock Ring	See Note**								
27	Escutcheon	1230-22								
28	Button - Specify Plain	55906-02								
29	Screw	158-27								
30	Adapter	25961-08								
31	Screw	520-27								
32	Compensator	516-17								
33	Handle Skirt	25106-03								
34	Screw	570-15								
35	Clear Monogram Handle	594-17								
36	Compression Washer	568-15								
37	Screw	569-15								
38	Button - Specify Index	25107-03								
39	Stem Assembly - R.H. Thread	6079-04								
	Stem Assembly - L.H. Thread	6080-04								
	Stem Assembly - R.H. Thread (Monogram)	6078-04								
40	Handle Assembly - Specify Index	9271-03								
41	Swivel - Copper Water Tube	244-17								
42	Swivel - Iron Pipe	1836-07								
43	Swivel Nut	25513-08								
44	Monogram Spout	524-13								
45	Monogram Diverter Spout	523-13								
46	Spout	455-32								
47	Diverter Spout	380-12								
48	Plug	27816-07								
49	Transfer Valve Stem Assembly	6052-08								
50	Screwdriver Stem w/washer and Screw	1011-17								
51	Lock Nut	See Note**								
52	Arm Flange	31252-02								
	Monogram Arm Flange	31251-03								
53	Shower Arm	298-12								
	Monogram Shower Arm	38613-03								
54	Shower Head S/A *	18953-02								
55	Shower Head S/A *	6181-03								

Note \* Refer to R 1301 on page 1-86 for parts for #18953-02

Refer to R 1316 on page 1-85 for parts for #6181-03

\*\* Note - These parts no longer available, if any one individual part is required, substitute Lock Nut #675-37 plus tube #1857-07.

Note - For R-1143 & R 1137

Refer to R 1020-22 and substitute Foot Tester #6192-02 for Spout #455-32

For R 1000

Refer to R 1500 for Tub Valve & Control Stop Parts

Refer to page 1-95 for Control Stop Bodies

Refer to 1400-1/2" on page 1-90 for Mixing Valve Parts

Refer to 15151-08 on page 1-94 for Mixing Valve Check Stop Parts

Refer to R 1331 on page 1-87 for Body Spray Parts

For R-1001

Refer to R 1501 for Tub Valve & Control Stop Parts

Refer to page 1-95 for Control Stop Bodies

Refer to R 1400-1/2" Monogram page 1-90 for Mixing Valve Parts

Refer to 15151-08 on page 1-94 for Mixing Valve Check Stops

Refer to R 1332 on page 1-87 for Body Spray Parts

### Monogram Handles

Clear.....594-17 Assembly...9271-03  
 Ruby Red.....595-17 Assembly...9272-03  
 Royal Blue.....596-17 Assembly...9273-03

Aura (Yellow)....597-17  
 Verdi (Green)....598-17  
 Amethyst.....599-17

Assembly...9274-03  
 Assembly...9275-03  
 Assembly...9276-03

**AMERICAN  
STANDARD**  
 PLUMBING & HEATING DIVISION